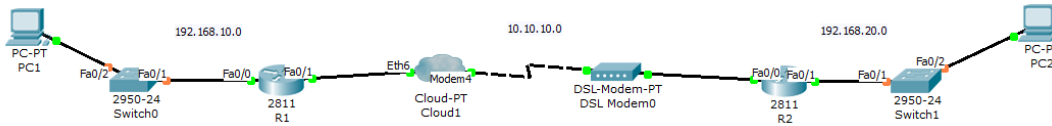


WAN MODEM ADSL



Configuraciones de las interfaces

R1

```
int fa0/0
ip add 192.168.10.1 255.255.255.0
no shutdown
exit
int s0/0/0
ip add 10.10.10.1 255.255.255.252
clock rate 64000
no shutdown
```

R2

```
int fa0/0
ip add 192.168.20.1 255.255.255.0
no shutdown
exit
int s0/0/0
ip add 10.10.10.2 255.255.255.252
no shutdown
```

Habilitacion de enrutamiento estatico

R1

```
conf t
ip route 192.168.20.0 255.255.255.0 10.10.10.2
```

VERIFICACION DE LA TABLA DE ENRUTAMIENTO R1

R2

```
conf t
ip route 192.168.10.0 255.255.255.0 10.10.10.1
```

